

Categoria / Category: C

TULSA



30% PL - poliestere / polyester
28% PC - acrilica / acrylic
21% VI - viscosa / viscose
12% CO - cotone / cotton
9% LI - lino / linen



H/cm: 140
Gr/m²: 630 (+/-5%)
Martindale: 40.000
Pilling: 4
Resistenza al fuoco: TB 117 - EN 1021
Trattamento ignifugo opzionale: 1IM
Antimacchia opzionale: SI NO

Consigliato per
Suggested for



H/cm: 140
Gr/m²: 630 (+/-5%)
Martindale: 40.000
Pilling: 4
Flame retardant: TB 117 - EN 1021
Treatment option: 1IM
Stain resistant optional: YES NO

Adatto anche per
Also suitable for



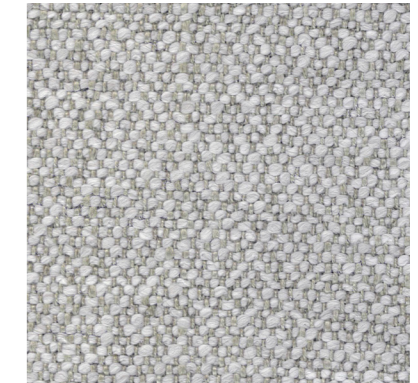
C82 - orso polare



C83 - airone



C85 - lepre



C88 - alpaca



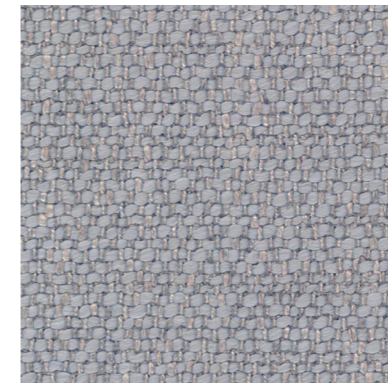
C86 - cervo



C81 - corvo



C87 - alligatore



C84 - squalo blu

