

Categoria / Category: A

NODONE



90% PES - poliestere / polyester
10% CO - cotone / cotton



H/cm: 140
Gr/m²: 700 (+/-5%)
Martindale: 90.000
Pilling: 4
Resistenza al fuoco: TB 117
Trattamento ignifugo opzionale: BS 5852
Antimacchia opzionale: SI NO

Consigliato per
Suggested for

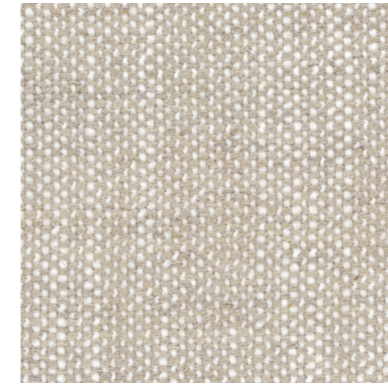


H/cm: 140
Gr/m²: 700 (+/-5%)
Martindale: 90.000
Pilling: 4
Flame retardant: TB 117
Treatment option: BS 5852
Stain resistant optional: YES NO

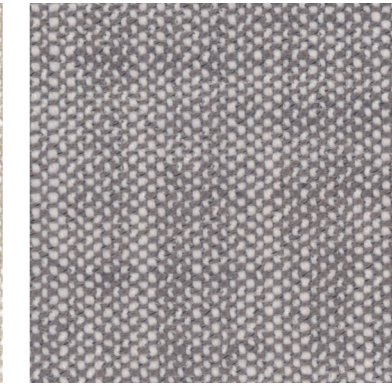
Adatto anche per
Also suitable for



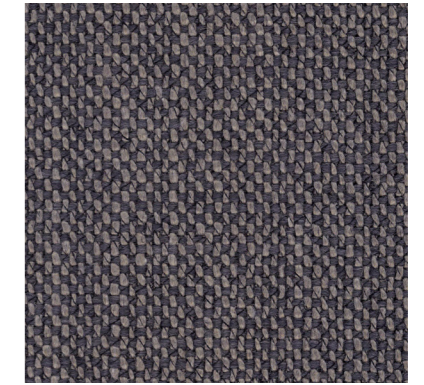
A41 - sabbia



A47 - argilla



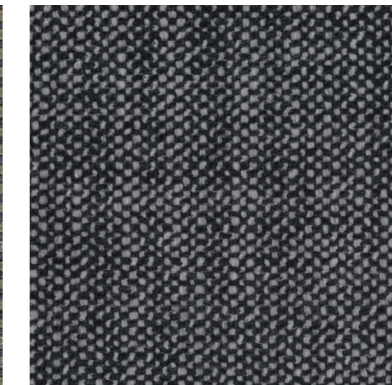
A48 - corteccia



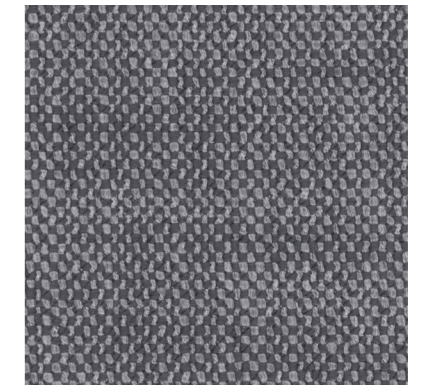
A44 - muschio



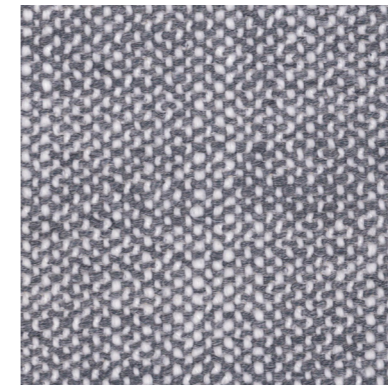
A40 - carbone



A46 - roccia



A43 - ghiaia



A42 - sasso

