

Categoria / Category: E

# GEMMA PLUS



40% VI - viscosa / viscose  
25% CO - cotone / cotton  
23% PC - acrilica / acrylic  
7% PL - poliestere / polyester  
5 % AF - altre fibre / other fibers



H/cm: 138/140  
Gr/m<sup>2</sup>: 710 (+/-5%)  
Martindale: 50.000  
Pilling: 4  
Resistenza al fuoco: BS 5852 - EN 1021  
Antimacchia opzionale:  SI  NO

H/cm: 138/140  
Gr/m<sup>2</sup>: 710 (+/-5%)  
Martindale: 50.000  
Pilling: 4  
Flame retardant: BS 5852 - EN 1021  
Stain resistant optional:  YES  NO

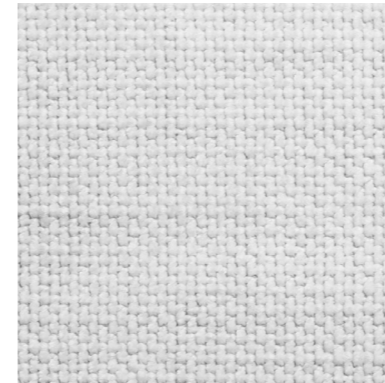
Consigliato per  
Suggested for



Adatto anche per  
Also suitable for



D54 - cigno



D59 - fungo



D61 - castagna



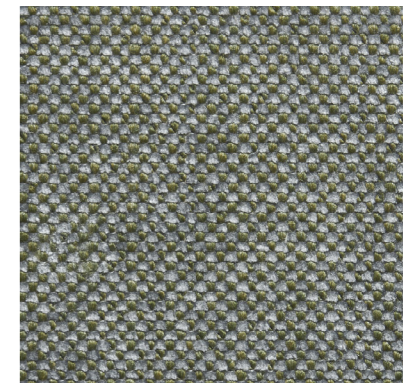
D65 - lumaca



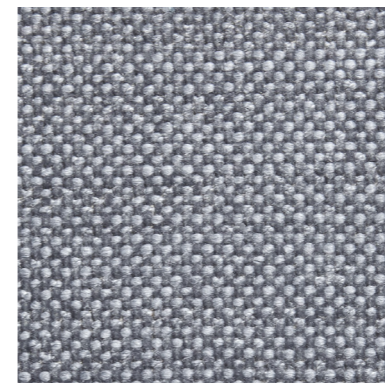
D60 - nocciola



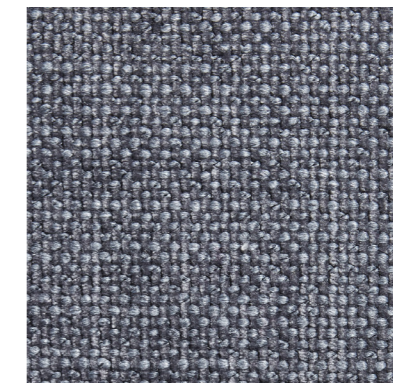
D57 - sottobosco



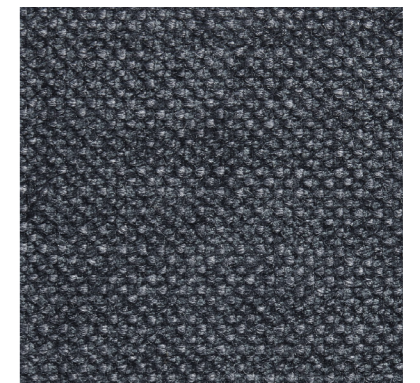
D55 - ghio



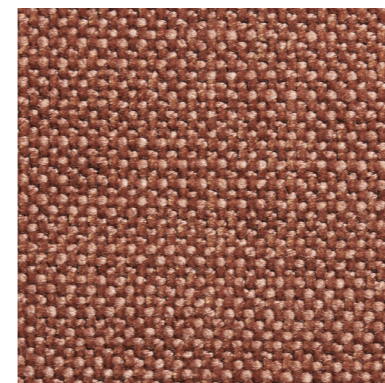
D56 - gufo



D73 - rondine



D66 - volpe



D58 - riccio

