

Categoria / Category: E

HIRA



27% VI - viscosa / viscose
40 % PC - acrilica / acrylic
5% LI - lino / linen
28% CO - cotone / cotton



H/cm: 138 / 140
Gr/m²: 670
Martindale: 52000
Pilling: 4 5000 rubs
Resistenza al fuoco: TB 117 - BS 5852

H/cm: 138 / 140
Gr/m²: 670
Martindale: 52000
Pilling: 4 5000 rubs
Flame retardant: TB 117 - BS 5852

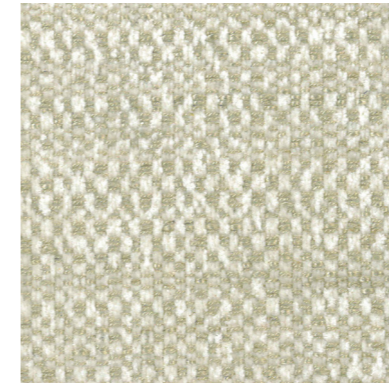
Consigliato per
Suggested for



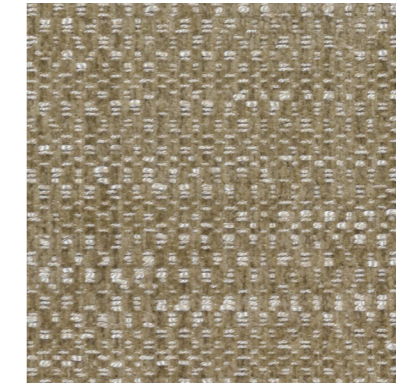
Adatto anche per
Also suitable for



E78 - sugar



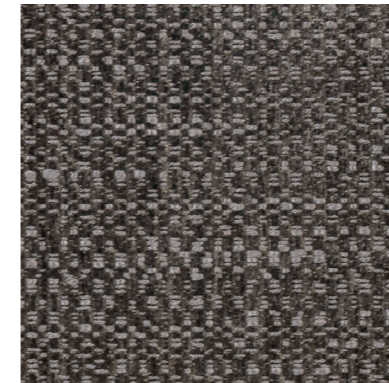
E75 - vanilla



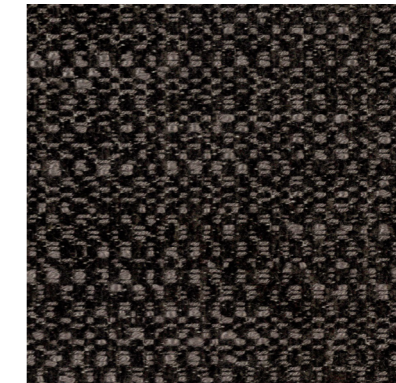
E70 - caramel



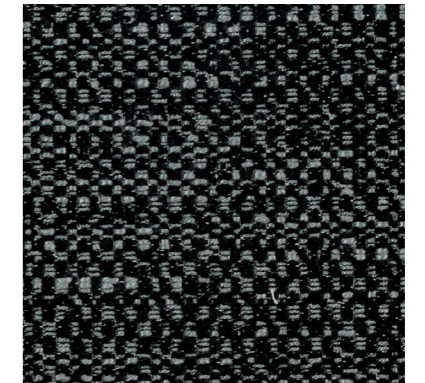
E74 - marron glacé



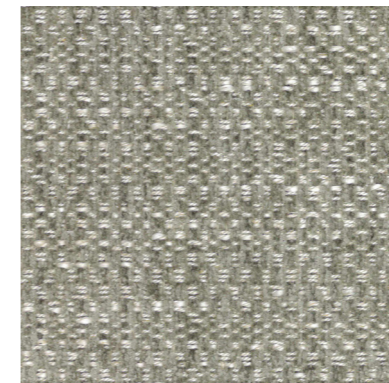
E73 - cacao



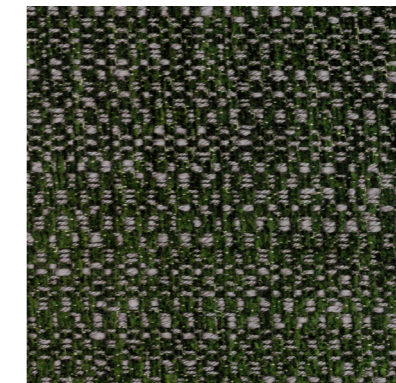
E76 - liquirizia



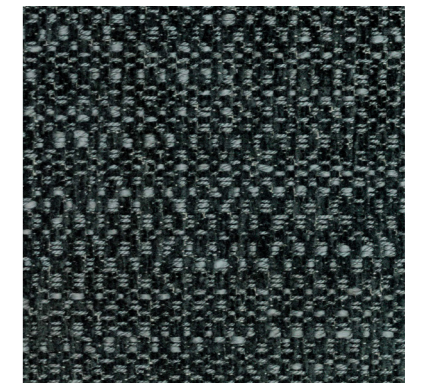
E7A - ostrica



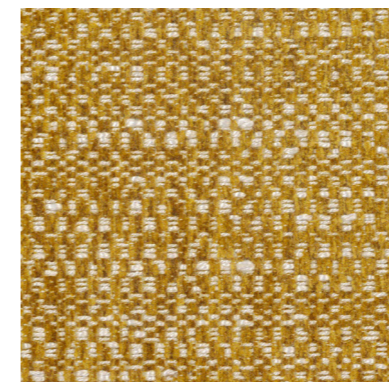
E79 - alga



E77 - fumè



E71 - curry



E72 - brick

